



WCD-02 Weld Position Monitoring System



Taiwan Baton Enterprise Co.,Ltd

■ <http://www.batons.com.tw>

■ [email:batons@mail2000.com.tw](mailto:batons@mail2000.com.tw)

WCD-02 Weld Position Monitoring System



Specifications

Model	WCD-02
Input Power	AC100V~240V / 50;60Hz / Single-phase
Camera Category	Special Camera (For welding)
Camera Resolution	Max 1280*1024 / 60fps
Imaging Type	Color / Grayscale
Focal Length	5mm ~ 50mm (Replaceable)
Min. Focusable Distance	250mm
Fill Light	None / (Optional) White
Operating Temperature	-10°C ~ +50°C
Camera Size	L:133*W:50*H:50 (Unit:mm)
Cooling Solution	Passive Air-Cooling / (Optional) Forced Water-Cooling
Camera Fixtures	11" Flexible Clamp Arm
Power Cord Length	10M
Display Cable Length	10M (Integrated)
Monitor Spec.	15" LCD Screen / 1280*1024 / with Stand

Features

Ideal for monitoring welding areas that are difficult for personnel to observe directly, enabling real-time viewing of welding conditions via a screen.

The lens can be replaced according to the shooting environment, offering flexibility for various applications.

(Optional) Water-Cooling Kit: Ideal for working environments requiring long-time continuous welding monitoring, helping prevent camera from overheating.

(Optional) Fill Light: Suitable for welding environments with weak ambient lighting, ensuring clear images when welding is not in progress.

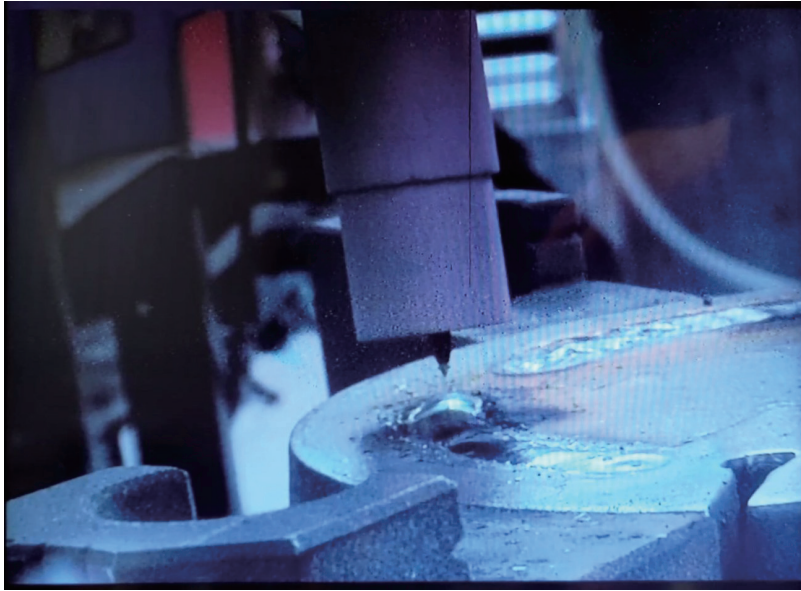
WCD-02 Weld Position Monitoring System



Demonstration

Setting: TIG 150A

Screen when welding



Screen when not welding

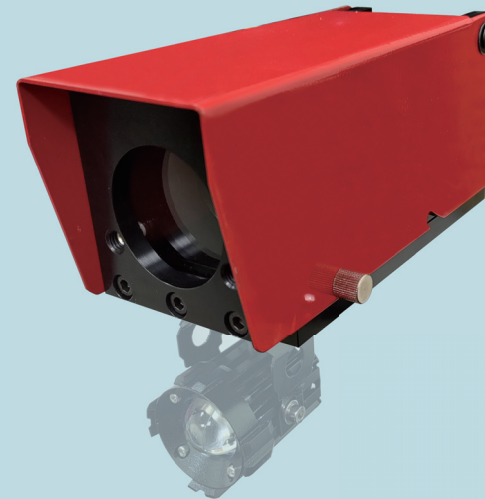


Comparison

	WCD-01	WCD-02
Scope of Application	Weld pool / Weld joint / Weld bead	Weld joint / Weld bead
Image Quality	Clear	Acceptable
Applicable Welding Method	MMA/MAG/MIG/TIG/PAW	MAG/MIG/TIG/SAW
Price	Higher	Lower

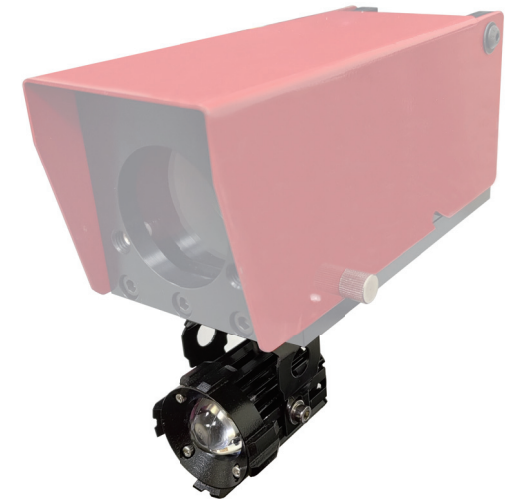
Optional Accessory

Water-Cooling Kit



Ideal for working environments requiring long-time continuous welding monitoring, helping prevent camera from overheating.
(*For reference only)

Fill Light



Suitable for welding environments with weak ambient lighting, ensuring clear images when welding is not in progress.
(*For reference only)